

spirax

Authorised Dealer;
 PUSHKARNA SALES PVT LTD.
 4772, Hauz Qazi, Delhi-110006.
 Telefax : 011-23217239/23216378.
 Emails : psp@airtelmail.in,
 sales@pushkarnasales.com
 Site : www.pushkarnasales.com

Bimetallic Steam Trap HP - 45

Description:

Bimetallic Steam Trap with inbuilt strainer. The Operating element comprises a state of bimetal disc which control the flow of condensate.

Sizes and Pipe Connections:

15 NB and 20 NB Screwed BSPT/NPT Socket
 Weld able ends

Note:

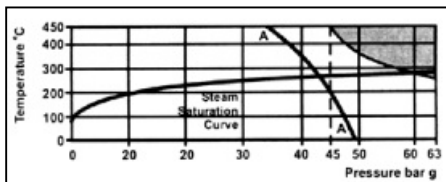
1. Available with weld on flanges on request.
2. Available with IBR certificate


Limiting Conditions:

| | |
|----------------------------------|------------------------|
| Body design conditions PN 63 | 63 kg/cm ² |
| PMO - Max. allowable pressure | 427°C. |
| TMO - Max. allowable temperature | 126 kg/cm ² |
| Hydraulic test pressure | |

Operating Range

- 1) For Socket weld able ends

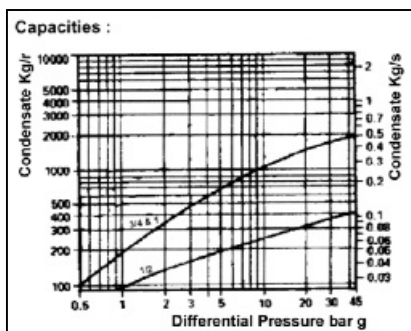
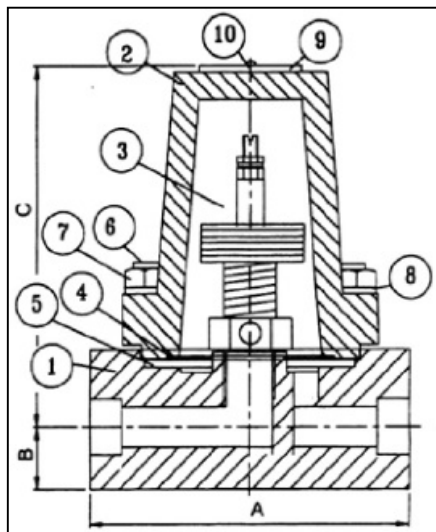


 The product must not be used in this region.

* PMO - Max. Operating pressure.
 A-A Flanged ANSI 300

- 2) For Scrd. BSPT/NPT ends

| | |
|----------------------------|-------------------------|
| Max. Operating pressure | 31.5 kg/cm ² |
| Max. operating temperature | 427 °C |
| Hydraulic test pressure | 63 kg/cm ² |



Dimensions : (approx.) mm

| Size | A | B | C |
|------|-----|----|-----|
| 15 | 130 | 25 | 135 |
| 20 | 130 | 25 | 135 |

Tolerance ± 5 mm.

Materials:

| No. | Part | Material | Standard |
|-----|----------------------|---|------------------|
| 1. | Body | Carbon Steel | ASTMA105 |
| 2. | Cover | Carbon Steel | ASTMA 105 |
| 3. | Thermostatic Element | Corrosive resistant Bimetal & S.S. | |
| 4. | Strainer Screen | Stainless Steel | ASTMA240 TP 304 |
| 5. | Body/Cover Gasket | Spiral wound SS 304 with Graphseal filler | |
| 6. | Cover Studs | Steel | ASTMA 193 Gr B 7 |
| 7. | Cover Nuts | Steel | ASTMA 194 Gr 24 |
| 8. | Washers | Steel | ASTMA 240 TP 304 |
| 9. | Name Plate | Stainless Steel | ASTMA 240 TP 304 |
| 10. | Rivet | Stainless Steel | |

How to Specify

15NB Spirax Marshall HP 45 Steam Trap, Socket weld ends.

Installation

The trap is designed for installation with the element in a horizontal plane and the cover at the top. When welding the trap into the line, the thermostatic element need not be removed, providing that welding is done by electric arc method.

Spare Parts

The spare parts available are shown in heavy outline. Parts drawn in broken line are not supplied as spares.

AVAILABLE SPARES

| | |
|-----------------------------------|-----|
| Element Set | |
| Complete with valve, valve seat & | |
| Valve seat gaskets | 3,6 |
| Strainer Screen (3 Off) | 4 |
| Set of Gaskets (Pk of 3) | 10 |
| Set of Cover studs (4 off each) | |
| Nuts & washers | 11 |

How to Order:

Always order spares by using the description given in the column headed available spare and stating the size & type of the trap. Example: 1 - Element set for 15NB HP 45 Steam trap.

Servicing

Before attempting to carry out any repair work ensure that the trap is fully bolted.

It is important to renew the complete assembly as listed above and to make sure that all joint face are clean. Always reassemble using new gaskets.

Servicing

Before attempting to carry out any repair work ensure that the trap is fully bolted.

It is important to renew the complete assembly as listed above and to make sure that all joint face are clean. Always reassemble using new gaskets.

How to fit element set

Remove cover from body by unscrewing the nuts. Unscrew the element set and replace with new one. cooling the seat thread with a non-run silicon sealant such as loclite Superflex Silicone sealant white. Lightly coat the element seat gasket with a suitable jointing compound. Replace trap cover & cover gasket making sure that the strainer screen is correctly located.

Ensure that the cover nuts are tightened evenly.

Recommended tightening torques

| Item size | or | Nm |
|-----------|-----|---------|
| 3 27 | mm | 120-132 |
| 11 | M12 | 110-120 |

