

Authorised Dealer;  
 PUSHKARNA SALES PVT LTD.  
 4772, Hauz Qazi, Delhi-110006.  
 Telefax : 011-23217239/23216378.  
 Emails : psp@airtelmail.in,  
 sales@pushkarnasales.com  
 Site : www.pushkarnasales.com

## Compressed Air Drain Trap CA – 10 A

### Description:

CA-10A is a condensate drain trap of cast iron body and cover for compressed air and other pressurised gases. The trap body is equalised with the pressure in the system through the balancing connection on top of the trap body.

### Available Sizes and Pipe Connections:

15 NB Screwed BSPT / . NPT

### Limiting Conditions:

Maximum operating conditions:

PMO - Max. operating pressure \_\_\_\_\_ 14 bar

TMO - Max. operating temperature \_\_\_\_\_ 220 °C.

Cold hydraulic test pressure 28 bar.

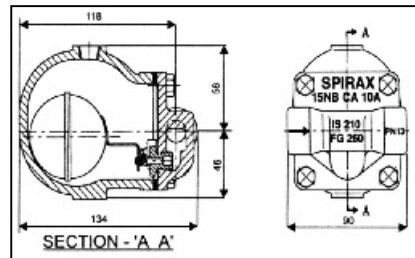
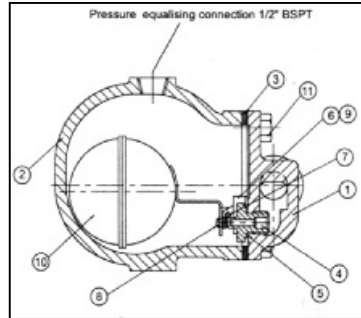
When used on liquids having a specific gravity of less than 1, the maximum operating pressures will be:

Sp.G.	kg/cm <sup>2</sup>	Bar
0.9	14.26	14
0.8	11.92	11.7
0.7	8.76	8.6
0.6	5.09	5.0

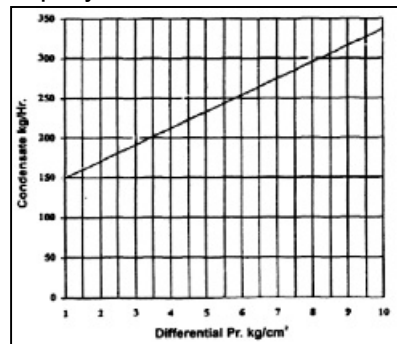
### Materials:

No.	Part	Material	Standard
1	Base	Cast Iron	S.210. FG 260
2	Cover	Cast Iron	I.S. 210.FG260
3	Cover Gasket	Asbestos Free Synthetic Fibre	
4	Valve Seat	SS Type 410	ASTM-A-276
5	Valve Seat Gasket	SS Type 304	ASTM-A-240
6	Pivot Frame	SS Type 304	ASTM-A-240
7	Pivot Pin	SS Type 304	ASTM-A-276
8	Button	Synthetic Rubber Viton	
9	Ch. Hd Screw M4x6Lg.	SS Type 304	IS 1364
10	Float Assly.	SS Type 304	ASTM-A-240
11	Hex. Hd. bolt M8x20Lg.	Carbon Steel	H.T. Gr. 8.8

Available spares are shown overleaf.



### Capacity Chart for CA10A:



9.1

**How to Specify:**

Example: 15 NB BSPT SPIRAX-MARSHALL CA10A-10.

**Installation:**

The arrow on the casting indicates the flow direction.

**Servicing:**

With suitable isolation repairs can be carried out with the air trap in the line.

Undo cover bolts and lift off cover. When re-assembling make sure that all joint faces are clean. Always use a new gasket and apply a thin coating of jointing paste.

Tighten cover bolts uniformly.

Open up isolating valve.

**Spare Parts:**

The spare parts available are shown in heavy outline. Parts drawn in broken lines are not supplied as spares.

Available Spares

Main Valve Assembly

with Float \_\_\_\_\_ A, B, C, D, E, F

Two Complete Sets of Gasket

(Pkt. of 5) \_\_\_\_\_ B.T

**How to Order:**

Always order spares by using the description given in the column headed, Available spares and stating the size and type of trap.

Example: 1) Main Valve Assembly for 15 NB SPIRAX MARSHALL CA10A-10 Compressed Airdrain trap.

**How to Fit Main Valve Assembly:**

Isolate and open up as above and remove existing mechanism.

Using a little jointing paste on the thread and gasket, fit the new valve seat to the body.

Attach the pivot frame C to the body with assembly set screws F.

Pit the float arm D to the pivot frame C using the pin E and by moving the complete assembly centre the valve head onto the seat orifice.

Hold the assembly firmly in place and tighten up set screws F.

Refit cover etc. as above.

