

Authorised Dealer:
 PUSHKARNA SALES PVT LTD.
 4772, Hauz Qazi, Delhi-110006.
 Telefax : 011-23217239/23216378.
 Emails : pspl@airtelmail.in,
sales@pushkarnasales.com
 Site : www.pushkarnasales.com

Forged Manifolds for steam distribution and condensate collection

Description

A range of forged compact manifolds with integral piston type stop valves for steam distribution and condensate collection duty.
 SDM/CCM manifolds can be used for either steam distribution duty or condensate collection duty depending on the way they are installed.

Available types, sizes and pipe connections

SDM/CCM manifolds are available with 4, 8 or 12 connections designated: **SDM/CCM04**, **SDM/CCM08** and **SDM/CCM12** respectively and flanged BS 1560 (ANSI) class 150 or 300 or socket weld to ANSI B 16.11 Class 3000 or screwed BSPT or NPT.

The Steam main / condensate return connection is **DN40**.
 The tracer line and drain connections are available as **DN15**, **DN20** flanged, screwed BSPT, NPT and socket weld to ANSIB 16.11.

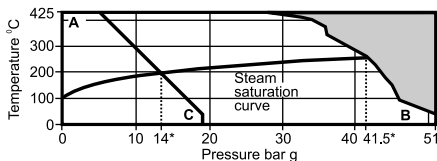
Optional extras

- The following are available at extra cost:
- Mounting kit comprising of studs, spacers and nuts.
- Insulating jacket for body and flanges.

Limiting conditions

Body design conditions : ANSI Class 300 (ISO PN50)
 Designed for a maximum cold hydraulic test pressure of 76 bar g

Operating range



The product must not be used in this region.

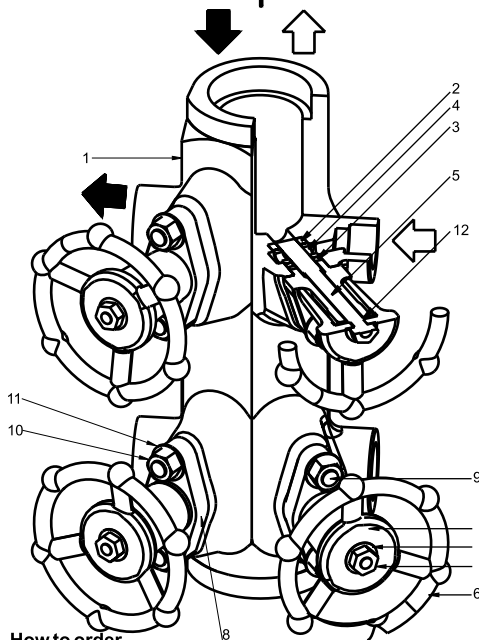
* PMO Maximum operating pressure for steam service.
 A-B Flanged ANSI Class 300, Screwed and Socket weld.
 A-C Flanged ANSI Class 150.

Materials

No.	Description	Material	Standard
1	Body	Carbon steel	ASTM A105
2	Lower ring	Graphite and stainless steel	
3	Upper ring	Graphite and stainless steel	
4	Lantern bush	Stainless steel	ASTM-A-276 SS410
5	Piston	Stainless steel	ASTM-A-276 SS316
6	Handwheel	SG Iron / Malleable Iron	
7	Handwheel nut	Stainless steel	
8	Bonnet	Carbon steel	ASTM A105
9	Studs	Stainless steel	
10	Nuts	Stainless steel	
11	B. Washers	Spring steel	
12	Washers	Stainless steel	
13	Name-plate	Stainless steel	

Alternatives

Flow direction when used for steam distribution duty | Flow direction when used for condensate collection duty



How to order

Example : Spirax SDM/CCM08 steam distribution and condensate collection manifold in forged carbon steel body with integral piston valves having 8 x DN20 socket weld connections to ANSI B 16.11 Class 3000.

Safety information, installation and maintenance

For full details see the Installation and Maintenance Instructions supplied with the product.

General

These manifolds have been designed for vertical installation. The back is provided with threaded connections M12 for ease of installation by attaching to a supporting structure.

Mounting kits

The manifolds is generally conveniently attached to the structural steelwork supporting the plant.
 For ease of installation it is recommended that spacers are fitted to give the manifold a stand-off of at least 50 mm.

Dimensions/weights (approximate) in mm and kg

Type	A	B	C	D	E	F	G	H	J	K	L	M	N	Weight
SDM/CCM04	255	125	65	110	70	60	45	96	110	130	50	M12	55	8.5
SDM/CCM08	505	125	65	110	70	60	45	96	110	130	50	M12	55	17
SDM/CCM12	755	125	65	110	70	60	45	96	110	130	50	M12	55	25.5

For convenience the following sets of mounting kit are available (optional extra):

- A single set comprising 2 off each stud, nut and spacer suitable for installing one SDM/CCM04 or SDM/CCM08.
- A single set comprising 4 off each stud, nut and spacer suitable for installing one SDM/CCM12
- A multiple set comprising 12 off each stud, nut and spacer suitable for installing 6 x SDM/CCM04, 6 x SDM/CCM08 or 3 x SDM/CCM12

After installing it is recommended that the manifold is insulated to minimise radiated heat losses and to protect personnel from burn risks. This is most easily done using the optional insulating jacket.

Steam distribution duty

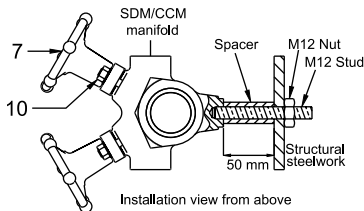
The recommended installation is with the steam inlet connection at the top of the manifold. A trap set should be fitted to the bottom. The discharge from this trap set should ideally be returned. If it is to be discharged to atmosphere we recommend that a diffuser is fitted.

Condensate collection duty

The recommended installation is with the condensate outlet at the top. The bottom of the manifold should be fitted with a stop valve for blowdown purposes. Again, we recommend that a diffuser is fitted.

Operation

In operation the piston valve should be either fully open or fully closed : **It is not intended for throttling duties.** As the piston valve has such a large sealing area it is not necessary to use a valve key to ensure dead tight shut-off.



Recommended tightening torques

Item	Nut	Threading	Nm
7	10 A/F	M6	0.1
10	14 A/F	M8	3-5

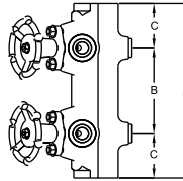
Spare parts

The spare parts available are detailed below. For ease of replacement an extractor tool is available for removing the sealing rings. Refer user Manual for spare parts.

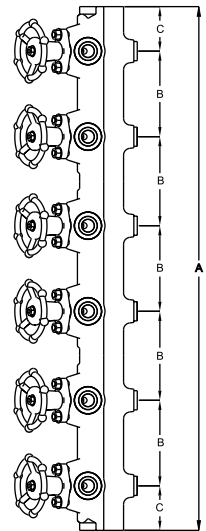
Available spares

Sealing ring set	2,3
Valve internals set	2,3,5
Extractor tool	

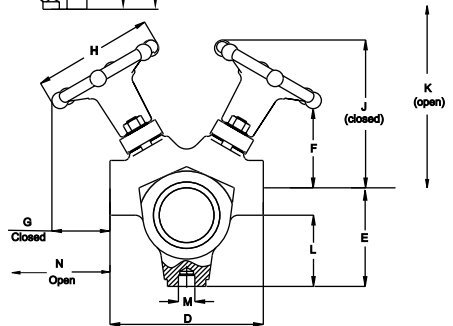
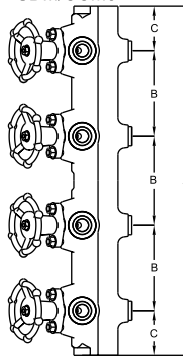
SDM/CCM04



SDM/CCM12



SDM/CCM8



How to order spares

Always order spares by using the description given in the column headed 'Available spares' and state the type and size of manifold.

Example: Sealing ring set for an integral piston valve on a Forged manifold SDM/CCM04 DN15 socket weld.