

Authorised Dealer:
 PUSHKARNA SALES PVT LTD.
 4772, Hauz Qazi, Delhi-110006.
 Telefax : 011-23217239/23216378.
 Emails : pspl@airtelmail.in,
 sales@pushkarnasales.com
 Site : www.pushkarnasales.com

Spiraview SG 20

The Spirax Marshall Spiraview is a novel product that allows you to visualise the flow of steam, water or oil inside pipelines. The visualisation of flow will help you diagnose problems occurring in equipment upstream or downstream of the Spiraview.

Spiraview overcomes the problems of poor visibility and improper distinction between vapour and condensate. This new design is ideal for applications in which one wants a clear indication of flow, such as downstream of paper drying cylinders, in DM water lines or for monitoring steam traps and heat exchangers.

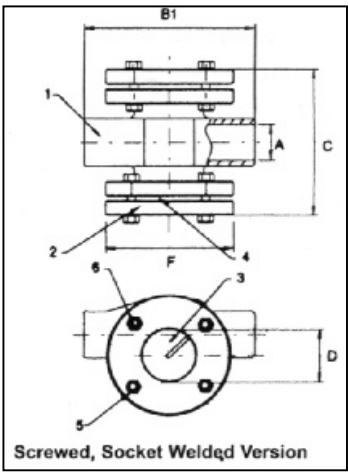
The two large windows of oil-lapped toughened borosilicate glass, which resist the etching and sludge build-up common to the normal glass used in other sight glasses, further improve visibility in the Spiraview. The borosilicate glass remains clear, preventing the frequent glass replacement necessary with other sight glasses, and the double glass configuration keeps the flow back-lit for better viewing.

Dimensions (approximate) in millimeters

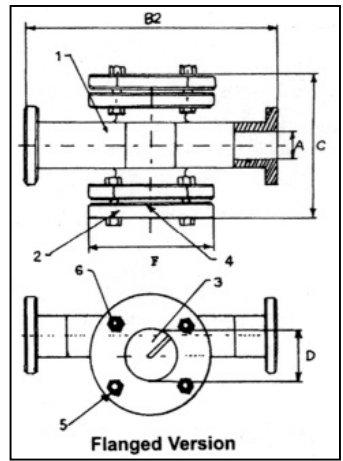
A	B1	B2	C	D	F	Wt(kg)
15NB/20NB	130	230	132	40	110	8
25 NB	190	290	170	55	135	10
40NB	20630	6212	70	160	12	
50NB	23030	6232	70	160	14	
65NB/80NB	-	260	310	108	151	31

Material

No.	Description	Material
1.	Body	ASTMA 216 Gr 216 WCB
2.	Flanges	Carbon Steel
3.	Toughened glass	Borosilicate oil-lapped glass
4.	Gasket	Reinforced exfoliated graphite
5.	Nut	High tensile
6.	Stud/Bolts	High tensile



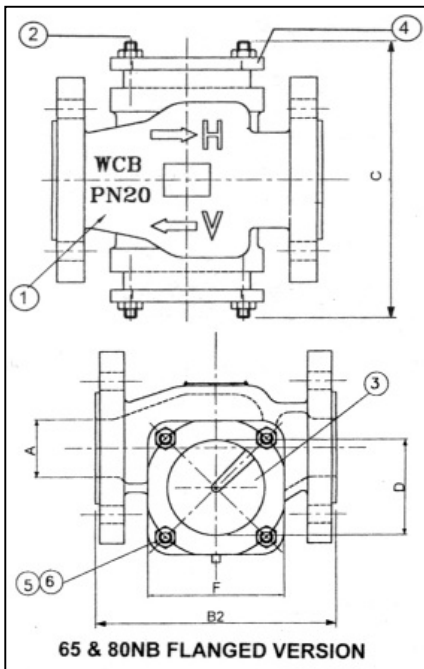
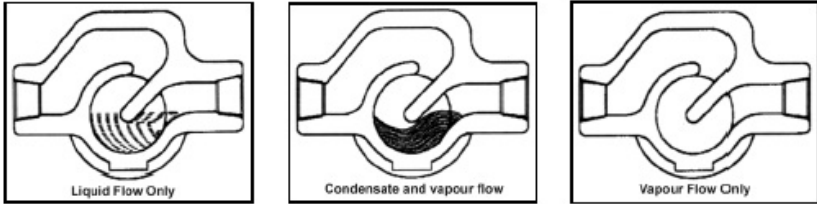
8.8



Clear Flow Viewing

Spiraview is designed to give you a clear visualisation of flow conditions with the unique feature of its deflector plate stationed in the sight chamber. Under normal conditions, a pool of condensate/liquid forms at the bottom of the sight chamber.

When vapour is also passing through the pipeline, the vapour is guided by the deflector plate into the pool of liquid. The density difference between the vapour and liquid causes the pool of liquid to become depressed, thereby indicating flow of vapour.



Limiting Conditions

- Maximum operating pressure 20 bar
- Maximum operating temperature 250°C
- Cold hydraulic test pressure 40 bar

Applications:

Condensate lines - Spiraview can be fitted on a condensate line to monitor steam flowing with the condensate. Because of the improved visibility it offers, Spiraview is especially suited for use in lines with high-speed flow.

DM water lines - Due to the turbulence effect at the deflector plate, very clear fluids can be monitored using Spiraview. Thus, a Spiraview fitted on a DM water line can indicate flow of DM water.

Oil lines - The flow of oil and oil vapour can be visualised using Spiraview.

Heat exchangers - Spiraviews can be used to check the efficiency of heat exchangers, especially in condensers. A Spiraview can be fitted downstream of a condenser, and flow of steam indicates a loss of performance in the condenser or a change in coolant conditions.

Available Sizes

15 NB, 20 NB, 25 NB, 40 NB, 50 NB.

Available End Connections

- Socket welded
- Screwed: BSPT, NPT
- Flanged: BS 10 table 'H', DIN (ND 25, ND 40), ANSI (150, 300)