

# spirax

Authorised Dealer:  
 PUSHKARNA SALES PVT LTD.  
 4772, Hauz Qazi, Delhi-110006.  
 Telefax : 011-23217239/23216378.  
 Emails : psp@airtelmail.in,  
 sales@pushkarnasales.com  
 Site : www.pushkarnasales.com

## Balanced Pressure Thermostatic Steam Trap BPT21Y

### Description

BPT21Y is a carbon steel maintainable balanced pressure thermostatic steam trap with integral flanged connections and has a Y-type strainer.

### Sizes and Pipe Connections :

15 NB - ANSI 150, 300  
 20 NB - ANSI 150

### Limiting Conditions :

Maximum Operating Conditions  
 PMO -Max. Operating Pressure 32 bar  
 TMO - Max. Operating Temperature 300°C.  
 Cold hydraulic test pressure 64 bar

Standard Unit	BPT21Y	having 'STD' fill capsule
Also available	BPT21Y CV	having 'STD' fill capsule & in-built check valve

### Capsule fill and operation

**Standard Capsule** is marked with the letter '**STD**' for operation at approximately 12°C below steam saturation temperature.

**Optionally**, the capsule can be supplied for sub-cooled '**SUB**' operation at approximately 24°C below steam saturation temperature or near to steam '**NTS**' operation at approximately 4°C below steam temperature.

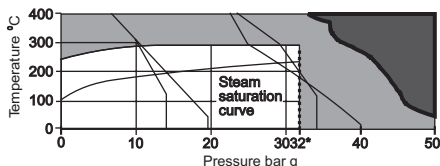
### Materials :

No.	Part	Material	Standard
1	Cover	Forged Carbon Steel	ASTM A 105
2	Capsule	Stainless Steel	
3	Valve Seat	St. Steel type 431	ASTM A 276
4	Strainer Screen	St. Steel type 304	ASTM A 240
5	Cover Gasket	Reinforced Exfoliated Graphite	
6	Body	Forged Carbon Steel	ASTM A 105
7	Cover Bolts	Carbon Steel H.T.	IS 1367
8	Strainer Cap	Stainless Steel	ASTM A 743 Gr. CA 40
9	Spacer Plate	St. Steel type 300	ASTM A 240
10	Spring	St. Steel type 200	ASTM A 276

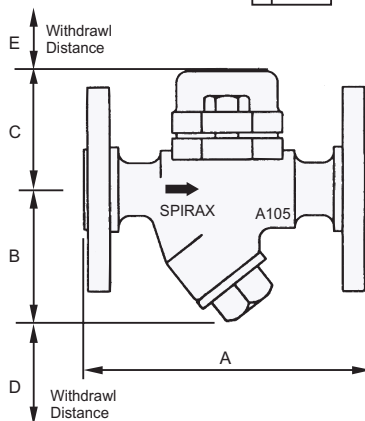
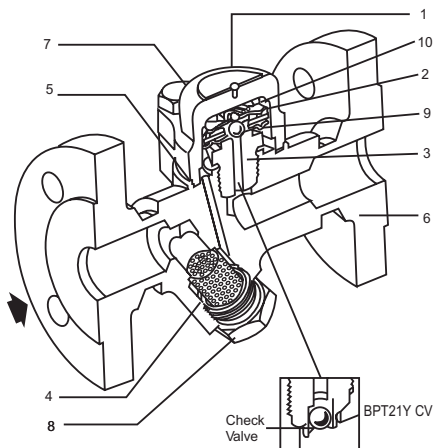
### Certification :

IBR approved BPT21Y can be supplied on request.

### Operating Range

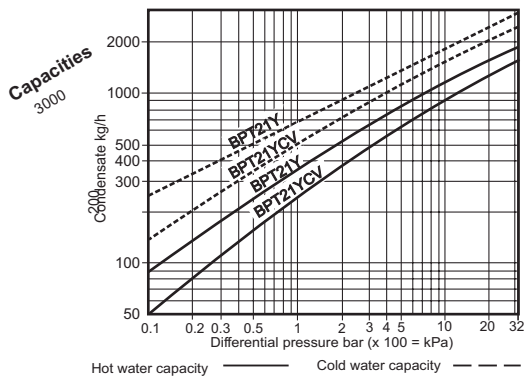


■ The product must not be used in this region  
 ■ The product should not be used in this region or beyond its operating range as damage to the internals may occur.



### Dimensions : (approx.) mm

NB	A	B	C	D	E
15	125	57	54	30	40
20	125	57	54	38	40



## Safety information

### Pressure

Before attempting any maintenance of the steam trap, consider what is or may have been in the pipeline. Ensure that any pressure is isolated and safely vented to atmospheric pressure before attempting to maintain the steam trap. Do not assume that the system is depressurised even when a pressure gauge indicates zero.

### Temperature

Allow time for temperature to normalise after isolation to avoid the danger of burns and consider whether protective clothing is required (including safety glasses)

### Caution

The body/cover gasket contains a thin stainless steel support ring, which may cause physical injury if it is not handled and disposed of carefully

## Installation

The trap is designed for installation with the capsule in a horizontal plane and the cover at the top, preferably with a drop leg immediately preceding the trap. Suitable isolation valves must be installed to allow for safe maintenance and trap replacement. Remove all protective caps prior to installation. Open isolation valves slowly unit normal operating conditions are achieved. Check for leaks and correct operation.

## Maintenance

Maintenance can be completed with the trap in the pipeline, once the safety procedures have been observed. It is recommended that new gaskets and spares are used whenever maintenance is undertaken. Ensure that the correct tools and necessary protective equipment are used at all times. When maintenance is complete open isolation valves slowly and check for leaks.

## How to fit a new capsule and seat

Remove the cover from the body by unscrewing the cover bolts. Remove the capsule assembly and unscrew the valve seat from the body. Replace with new gasket and valve seat, and tighten to the recommended torque.

Reassemble the spacer plate, capsule and spring. Fit new cover gasket and retighten cover bolts evenly to the recommended torque,

## How to clean or replace the strainer screen

Undo the strainer cap and remove the screen. Clean or replace as required and reassemble the strainer cap into the body, ensuring that the screen is located centrally. Using a little anti-seize compound on the threads tighten to the recommended torque.

## Disposal

This product is recyclable. No ecological hazard is anticipated with the disposal of this product, providing due care is taken.

## How to order

Example : Spirax Marshall 15 NB BPT21Y Carbon steel bodied maintainable balanced pressure steam trap. Flanged ASA 150 with 'STD' fill capsule for operation at approximately 12°C below steam saturation temperature.

## Spare parts

The Spare parts available are shown in heavy outline. Parts drawn in broken line are not supplied as spares.

## Available spares

Capsule and seat assembly set	2,3,9,10
Strainer screen & gasket kit (Packet of 3)	4,5

## How to order spares

Always order spares by using the description given in the column headed 'Available spares' and state the trap size and capsule fill type.

**Example :** Refer 'User Manual' for appropriate code numbers.

